

SLIT LAMPS TSL-900 SERIES

LED Slit Lamps



With the TSL-900 series you'll get the ideal value for your money: high-performance and affordable for everyone.

The excellent quality of the HD optical system and the option to choose a digital imaging system will enable precise observation of the patient's eye. For reliable results and the added value of patient education.



SLIT LAMPS TSL-900 SERIES

Quality in detail

MAIN FEATURES AT A GLANCE

Illumination system

- Inclinalable (HS-type only)
- Long-life economical LED lamp
- High illumination intensity
- Natural colour temperature
- Optimal observation and analysis of cornea and retina



TSL-900H(digital)



TSL-900Z



Metal Plate Table Kit

- For fast and easy table mounting
- Perfect fit

HD optical system with 5-step magnification

- Resolution up to 200 lp/mm (2,700 N lp/mm)
- Magnification 6×, 10×, 16×, 25×, 40×
- View every detail of all the various structures



All-encompassing filter range

- Including built-in yellow filter
- Red-free, neutral density, blue, IR heat-absorbing filter
- Diffuser

OPTIONAL EQUIPMENT

TAT-80R Applanation Tonometer

- Gold standard in IOP measurement
- Best reproducibility and accuracy
- Reliable and durable



Measuring eyepiece

- With a reticle inside
- Convenient measurement of pathologies
- For more accurate diagnosis



GET YOUR DIGITAL SLIT LAMP

- TSL-900Hdigital as a complete solution
- Upgrade kit for TSL-900Z and TSL-900H

Digital imaging system includes

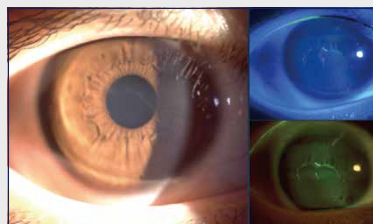
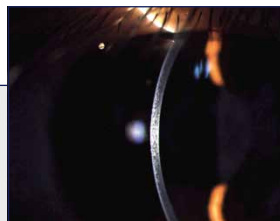
- Digital camera system
- Beam-splitter
- USB cable
- Eyeview software
- Compatible with Windows OS
- IR Background illumination module for Meibomian glands observation (TSL-900H/TSL-900Hdigital)

Performance

- Wide dynamic range
- Meibomian glands examination
- Auto exposure
- Auto gain
- Auto white balance
- Auto OD/OS indicator

Software features

- Easy patient management
- Functional analysis of images and videos
- Comparison of several images at one time
- Customisation based on individual needs



CAMERA SYSTEM (TSL-900Z + digital upgrade kit/TSL-900Hdigital)

Resolution	5 MP/2592 × 1944
Connectivity	USB 3.0
Photo format	JPEG
Video format	MP4 H.264
Chip size	1/1.8"
Frame rate	25 fps

SLIT LAMPS TSL-900 SERIES

Specifications

	TSL-900Z / TSL-900Z + digital upgrade kit	TSL-900H / TSL-900Hdigital
OPTICAL SYSTEM		
Type	Galilean converging binoculars 10°	Galilean converging binoculars 10°
Magnification	5-step rotating drum change 6×, 10×, 16×, 25×, 40×	5-step rotating drum change 6×, 10×, 16×, 25×, 40×
Eyepiece	12.5×	12.5×
Field of view	36.2, 22.3, 14, 8.9, 5.7 mm	36.2, 22.3, 14, 8.9, 5.7 mm
Interpupillary distance	52 to 80 mm	52 to 80 mm
Dioptre adjustment	-8 D to +8 D	-8 D to +8 D
SLIT PROJECTION AND BASE		
Slit width	0-14 mm continuously variable	0-14 mm continuously variable
Slit length	1-14 mm continuously variable	1-14 mm continuously variable
Aperture diameters	0.2, 3.5, 8, 14 mm	0.2, 1, 2, 3, 5, 10, 14 mm
Filters	Yellow, red-free, neutral density, blue, IR heat-absorbing filter, diffuser	Yellow, red-free, neutral density, blue, IR heat-absorbing filter, diffuser
Slit angle	0° to 180°	0° to 180°
Slit inclination	n.a.	5°, 10°, 15°, 20°
Base travel	30 mm Z-axis, 115 mm X-axis, 110 mm Y-axis	30 mm Z-axis, 115 mm X-axis, 110 mm Y-axis
Chin rest vertical movement	80 mm	80 mm
Horizontal fine adjustment	12 mm	12 mm
Fixation lamp	Red LED	Red LED
Light source	White LED	White LED
Luminance	≥150 klx	≥150 klx
DIMENSIONS AND WEIGHT		
Dimensions WDH	330 × 390-460 × 460 mm	330 × 390-460 × 650 mm
Weight	16 kg	17 kg
POWER SUPPLY		
Power supply input	100 – 240 V, 50/60 Hz	100 – 240 V, 50/60 Hz
Power supply output	12 – 15 V DC	12 – 15 V DC



TOMEY EUROPE
TOMEY GmbH
 Wiesbadener Strasse 21
 90427 Nürnberg, Germany
 Phone +49 911 938 546 2 0
 Fax +49 911 938 546 2 20
 Email info@tomey.de

UAE

Ajman Free Zone, I5,
 Al Bustan, Ajman, UAE,
 Tel: +971 58 8051 849 UAE



www.tomey.de